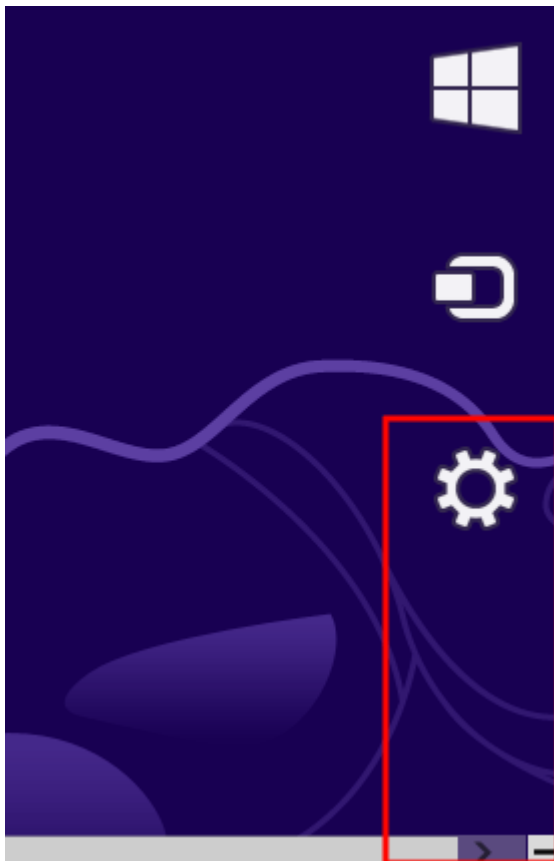


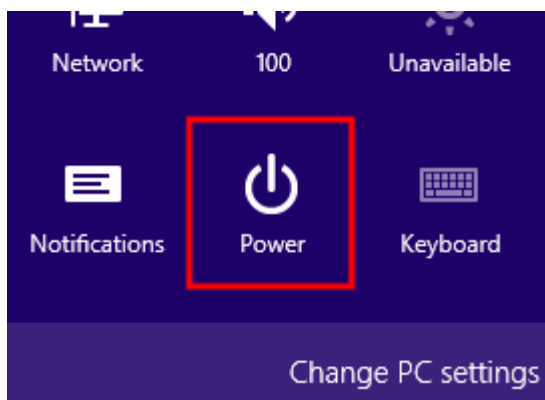
How to install an unsigned driver on Windows 8.0

Windows 8 by default will not let you install unsigned drivers. In order to install an unsigned driver, you can follow the steps shown below to start Windows 8 in "Disable Driver Signature Enforcement" mode.

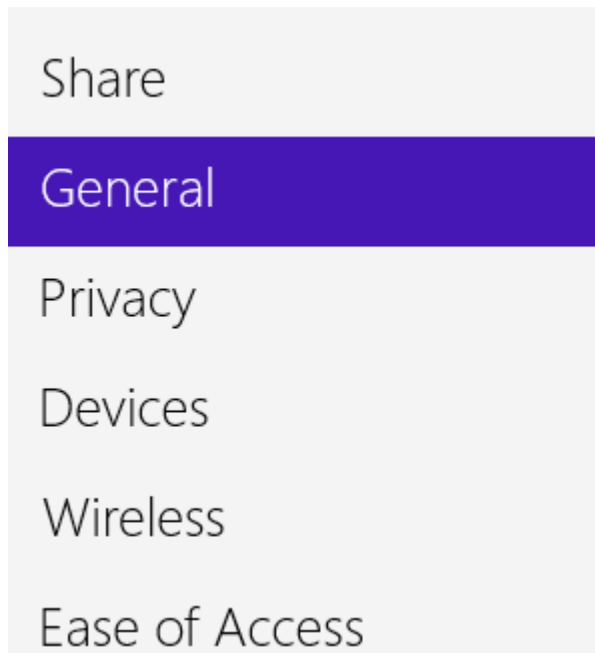
Move the cursor over the top or bottom right corner or the screen and it will show extra options on the right side of the screen (This is the new Charm Bar in Windows 8). Choose the Settings option (icon looks like a Gear).



Power option



Choose **General** on the left hand side and then click **Restart now** button on the right



Remove everything

If you want to recycle your PC or s settings.

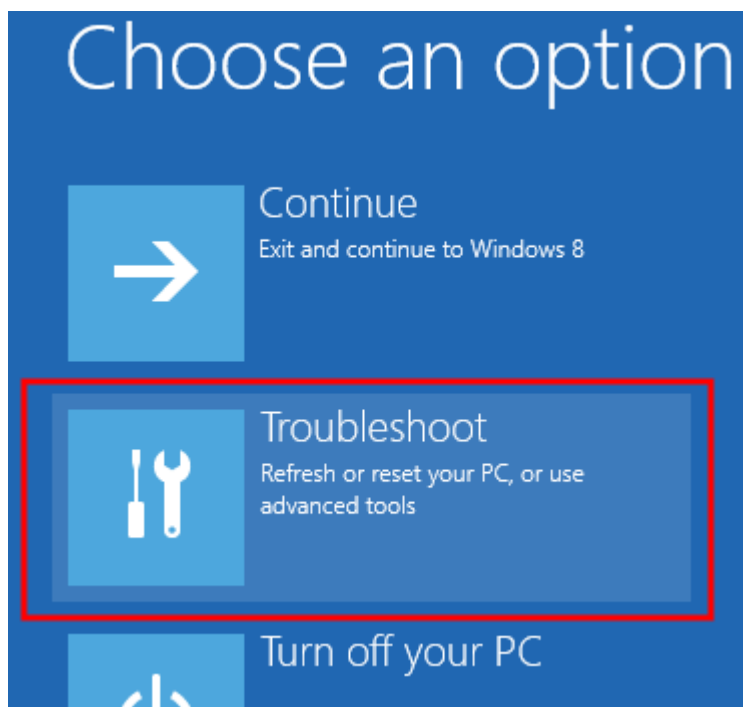
Get started

Advanced startup

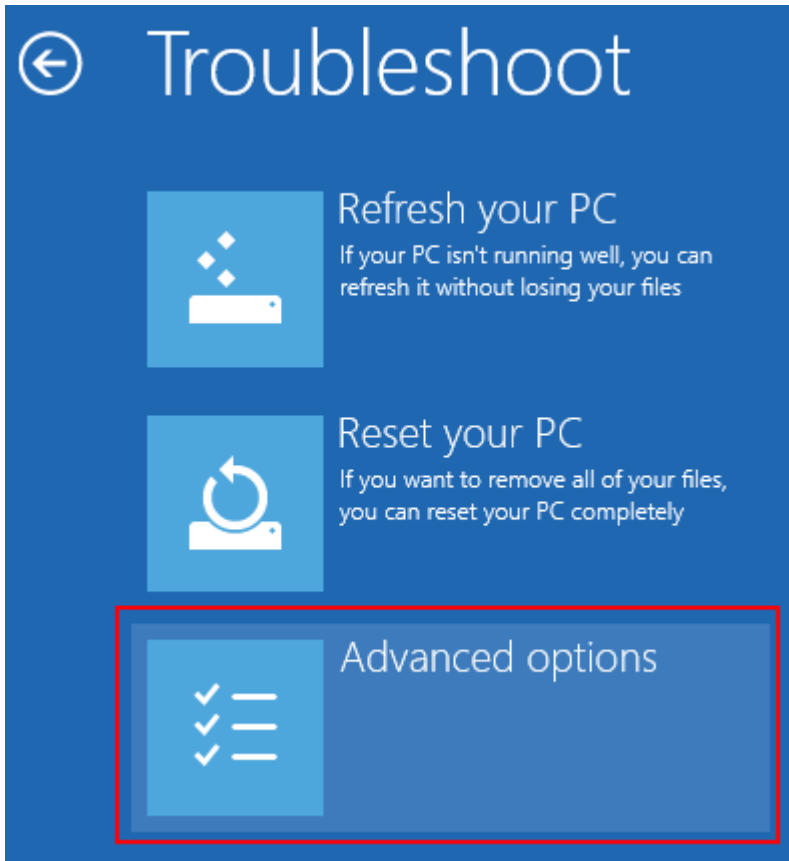
Start up from a device or disc (such startup settings, or restore Windows

Restart now

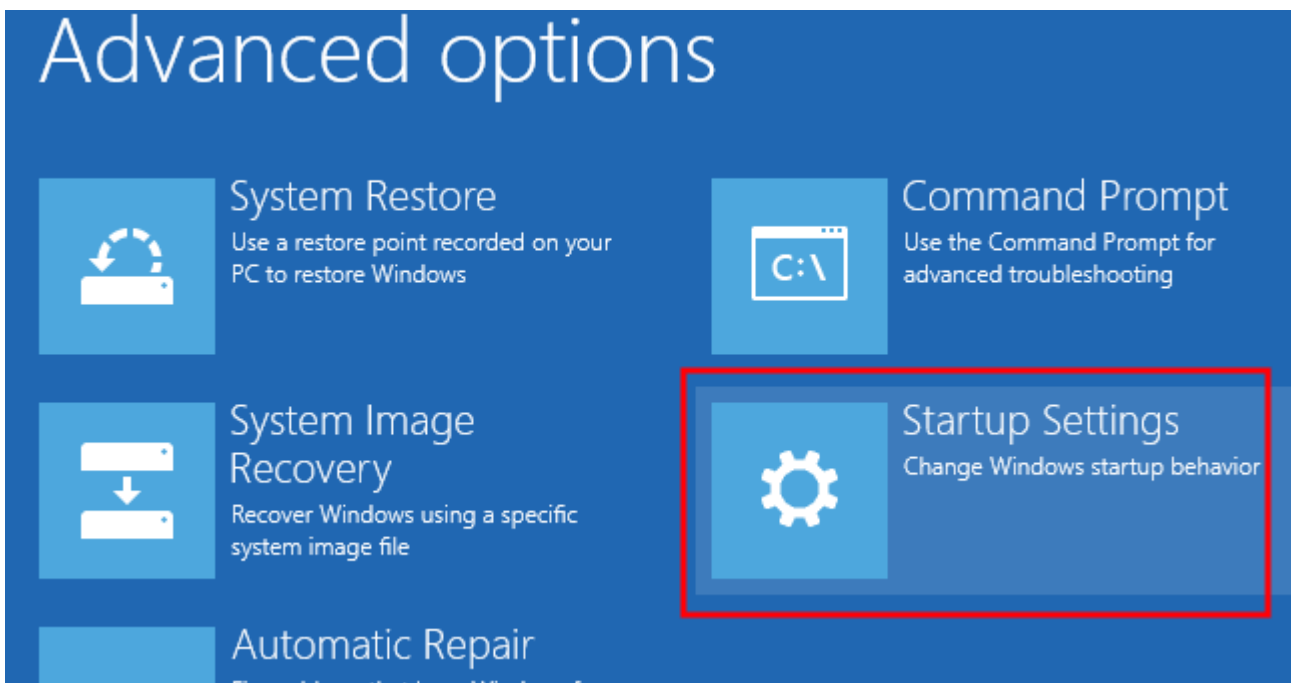
Click **Troubleshoot**



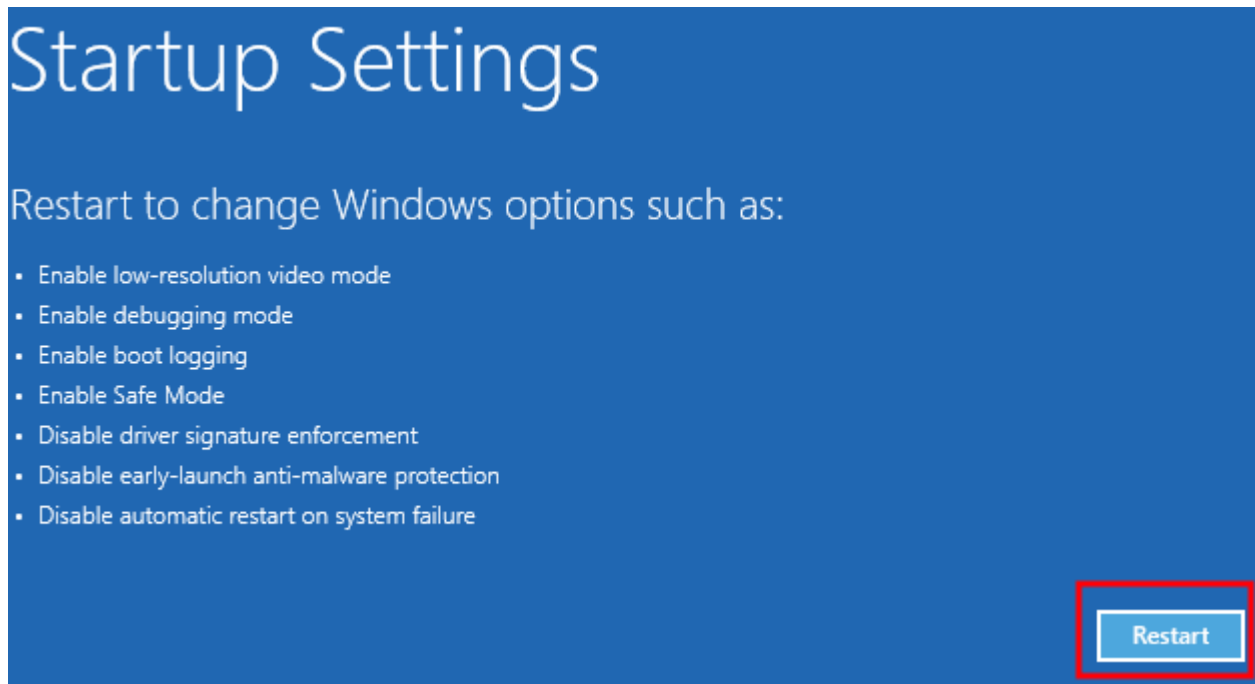
Click **Advanced options**



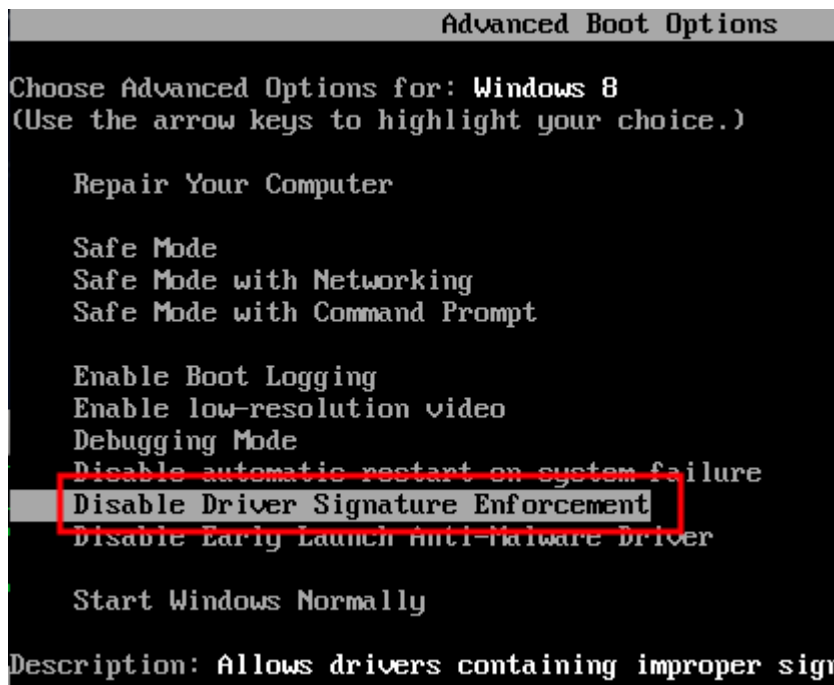
Click **Startup Settings**



Click the **Restart** button



Choose the **Disable Driver Signature Enforcement** and hit the Enter key to start Windows



You should now be able to install the driver needed. After the driver installs, you can reboot the computer and it should revert back to enabling driver signature enforcement again.